

VNP30S55XR

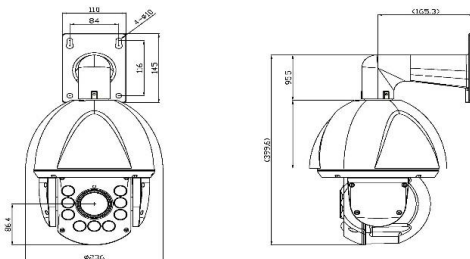
Full HD 2 Megapixel 30x IR PTZ Camera
STARLUX



Key Features

- 2 Megapixel Full HD
- Built-in Fan/Heater
- 30x Auto Focus (f4.3~129mm)
- Total 360x Zoom (12x Digital Zoom)
- 200M IR distance
- IR sync with Zoom (10 levels) and IR On/Off
- WDR (Low/Middle/High)
- H.264: 30fps/1080p, MJPEG: 30fps/VGA
- Integrated motion detection with pre- and post alarm image/video buffering
- Event-triggered FTP and email upload of still images and videos
- Full Duplex two way Audio support
- UPnP supported
- Micro SD/SDHC local storage, event triggered, scheduled and continuous recording supported
- External sensors or external alarm devices
- Supports CBR(constant bit rate) and VBR (variable bit rate) modes
- Integrated HTTP Web server supporting 50 simultaneous users connection
- HTTPS supported (Hyper Text Transfer Protocol Secured)
- Integrated E-mail, FTP, DDNS and DHCP client
- Extensive CGI API for software integration and remote programming operations
- IP 66
- 24VAC

Dimensions (Unit: mm)



IR Night Vision High Speed PTZ

Specifications

Model	VNP30S55XR
Camera	
Image sensor	1/2.8" Type " Exmor R" CMOS Sensor
Day & Night	True Day/Night (ICR)
Optical Zoom	30X
Digital Zoom	12X
Lens	30x AF zoom (f4.3~129mm)
IR Distance	200M
Min. illumination	0 Lux with IR
Pan / Tilt	Pan: 360 Endless
	Tilt: -0~90 deg (Auto flip)
PAN / TILT Speed: Preset 250deg/Sec, Manual 0.1~120deg/Sec	
WDR	Low / Middle / High
Noise Reduction	2D+3DNR
White Balance	Auto, ATW, Indoor, Outdoor, Onepush WB, Manual WB, Outdoor Auto
Video	
Compression	H.264 High Profile @Level5.0 @Level4.1 (Other resolutions), Motion JPEG
Resolutions	Up to 1920 x 1080
Frame rate	H.264 Up to 30fps with FULL HD 1920x1080
	H.264 Up to 30fps with HD MJPEG Up to 30fps with VGA resolution.
Video streaming	Support multi stream with H.264, MJPEG
	H.264+H.264+MJPEG Triple Adjustable frame rate
Image setting	VBR/CBR in H.264
	Day & Night
	Auto White Balance
	Auto Exposure
	Privacy Mask
	D-WDR
	2DNR/3DNR
	DSS, Mirror/V-Flip, Corridor-View(in H.264)
Audio	
Audio streaming	Two-way, full duplex
Compression	G.711
Sample Rate	8KHZ
Data Rate	64Kbps
Audio input	Microphone input / 1 x Line-In (Mono)
Audio output	Line output / 1 x Line-Out (Mono)
Control	
RS-485	1PORT
Network	
Security	Password protection/ User access log / HTTPS encryption
Supported protocol	HTTP, HTTPS, FTP, SMTP, UPnP, DNS, DynDNS, NTP, RTSP, RTP, TCP, UDP, ICMP, DHCP, SNMP, IP Filter
System integration	
Intelligent video	Motion detection up to 1920x1080 with 12x12 blocks
Alarm trigger	Motion detection (4 x Sensor in, 2 x Alarm out)
Alarm events	File upload via ftp, E-mail, Notification via Email, FTP and TCP
Video buffer	5MB pre-alarm and post-alarm-180sec
Recording	Save to MicroSD/SDHC card with event mode and continuous mode
Firmware upgrade	Remote upgrade via network
API	CGI Interface document; ActiveX Interface(ocx(dll) + document)
Physical	
RESET Button	1 x Factory Reset Button (SIDE)
Power Source	AC24V 2.5A
Power Consumption	Normal: 13W, IR ON: MAX 35W(VA)
Weight (Appr.)	4,500g
LED's	Network Connection
Dimension(mm)	236mm X 399.6
Environment	
Operating Temp.	-25 degree~50 degree Celsius (-13F~122F)
Storage Temp.	-30 degree~60 degree Celsius (-22F~140F)
IP66	

Accessories

Model No.	Series
WB202	Wall mount bracket
CB202	Ceiling mount bracket
PM202	Pole mount bracket
CM202	Corner mount bracket

Made in Korea