

IP Night Vision – Indoor Dome

VNI80161XR

3 Megapixel Night Vision Indoor Dome IP Camera

Improved High Power LED's

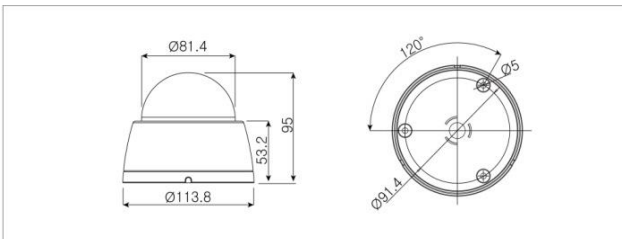
Compact slim design with quick & easy installation



Key Features

- 3 Mega pixel 1/2.8" SONY progressive scan CMOS image sensor for excellent image quality
- 2.8mm Wide angle Megapixel Board Lens (Option 3~12mm Motorized zoom lens)
- 30M IR Beam Distance (4 Built-in High Power LED's)
- Triple Stream
- Supports image resolution up to 3MP
- 2065(H)x 1553(V) 3MP Max. 30fps
- Supports VBR/CBR in H.264
- Controllable frame rate
- Supports WDR, Defog, 2D+3DNR, Smart IR
- Digital PTZ
- Corridor view in H.264
- Tool-Free 3-Axis
- 12VDC/ IEEE802.3af POE
- Conformant with ONVIF (Profile-S)
- Includes Windows based IP Installer and license-free 16 channel NVR(Network Video Recorder) software

Dimensions (Unit :mm)



Specifications

MODEL	VNI80161XR
System	
CPU	ARM1176JZF-S (400 MHz, Instruction cache: 32kbyte, data cache)
Flash	2Gbit Flash memory
SDRAM	2Gbit DDR3
Camera	
Image sensor	3.15 Mega 1/2.8" SONY progressive scan CMOS
Total Pixels	2065(H) x 1565(V) 3.23 Megapixel
Effective Pixels	2065(H) x 1553(V) 3.20 Megapixel
S/N Ratio	More than 50dB
Min. Illumination	0 Lux (IR On)
IR Distance	30M (4 Built-in Power LED's)
Day & Night	ICR
Lens	2.8mm Wide angle Megapixel Board Lens (Option: 3~12mm Motorized lens)
Video	
Video compression	H.264 High Profile@4.0, MJPEG–Image quality: 3 Steps
Resolutions	Up to 2048 x 1536 3MP
Frame rate	Triple Stream 1 st stream: 30fps@2048x1536 2 nd stream: 30fps@640x480 3 rd stream: 30fps@640x480
Video streaming	Triple stream with H.264/MJPEG, Adjustable frame rate, CBR/VBR in H.264
Pan/Tilt/Zoom	Digital PTZ
Corridor view	Corridor view in H.264 (190degree/ 270degree)
Image setting	Brightness, contrast, Sharpness Day & Night Auto White Balance Auto Exposure Privacy Mask DSS, Effect - Color, Mirror/V-Flip, etc.
System Integration	
Security	Password Protection, User access log, HTTPS encryption
Supported protocol	HTTP, HTTPS, FTP, SMTP, UPnP, DNS, DDNS, NTP, RTSP, RTP, TCP, UDP, ICMP, DHCP
Intelligent video	Object based Motion detection up with 12x 12 block Tamper detection with Global scene change and defocus.
Alarm events	File upload via ftp, E-mail, Notification via email, SD Card.
Video buffer	5MB pre-alarm and 180 sec (max) post-alarm
Firmware upgrade	Remote upgrade via network
API	CGI Interface document, ActiveX Interface(ocx(dll) + document)
Physical	
Power Source	DC12V/1.5A, PoE(Power over Ethernet): 802.3af-Optional
Power Consumption	Max. 6W with IR
Storage	Micro SD(Option)
Net Weight	270g
LED's	Power, Network Connection
Dimension	113.8mm(Dia.) x 95mm (H)
General	
Operating Temperature	-10 degree~50 degree Celsius(14F~122F)
Storage Temperature	-20 degree~60 degree Celsius(-4F~140F)
Software	
Included Software	NVR C/S (16 Channel), IP Installer (Windows only)

* Specifications are subject to change without prior notice.

Made in Korea