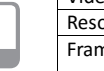


VD10M2

2 Megapixel IR Night Vision Indoor Dome Camera

Improved High Power LED's

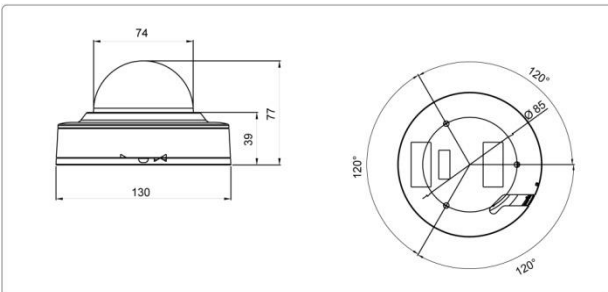
Compact slim design with quick & easy installation



Key Features

- 2 Mega pixel 1/2.8" SONY progressive scan CMOS image sensor for excellent image quality
- 4mm Wide angle Megapixel Board Lens
- 20M IR Beam Distance (4 Built-in High Power LED's)
- Multi Streaming of H.264 and MJPEG
- Supports image resolution up to 2MP
- Full HD (1920x1080:1080p) , 30fps
- Supports VBR/CBR in H.264
- Controllable frame rate
- Supports WDR, Defog, 2D+3DNR, Smart IR
- Privacy Masking up to 8 areas
- Tool-Free 3-Axis
- IEEE802.3af POE

Dimensions (Unit :mm)



* Specifications are subject to change without prior notice

IP Night Vision – Indoor Dome

Specifications

MODEL	VD10M2
System	
CPU	ARM1176JZF-S (400 MHz, Instruction cache: 32kbyte, data cache)
Flash	128 Mbyte
SDRAM	128 Mbyte
Camera	
Image sensor	2.0 Mega 1/2.8" SONY progressive scan CMOS
Total Pixels	1952(H) x 1116(V) 2.18 Megapixel
Effective Pixels	1944(H) x 1104(V) 2.14 Megapixel
S/N Ratio	More than 50dB
Min. Illumination	0 Lux (IR On)
IR Distance	20M (4 Built-in Power LED's)
Day & Night	ICR
Lens	4.0mm Wide angle Megapixel Board Lens
Video	
Video compression	H.264 High Profile@4.0, MJPEG-Image quality: 3 Steps
Resolutions	Up to 1920 x 1080 (Full HD)
Frame rate	H.264 Up to 30fps with 1920x1080, MJPEG Up to 30fps with VGA resolution
Video streaming	Support multi stream with H.264, MJPEG, Adjustable frame rate, CVBR/CBR in H.264
Pan/Tilt/Zoom	Digital PTZ
Corridor view	Corridor view in H.264 (190degree/ 270degree)
Image setting	Day & Night Auto White Balance Auto Exposure Privacy Mask WDR(Low/Middle/High) Defog(On/Off), Smart IR (Off / 0~15) 3DNR(On/Off) DSS, Effect - Color, Mirror/V-Flip, etc.
Alarm In/Out	In: 1, Out: 1
Audio	
Audio Streaming	One Way Audio (Microphone Input/ 1x Live-in (Single mono))
Audio Compression	G.711
System Integration	
Security	Password Protection, User access log, HTTPS encryption
Supported protocol	HTTP, HTTPS, FTP, SMTP, UPnP, DNS, DDNS, NTP, RTSP, RTP, TCP, UDP, ICMP, DHCP
Intelligent video	Motion detection up to 1920x1080 with 4x3 blocks
Alarm events	File upload via ftp, E-mail, Notification via email, FTP and TCP
Video buffer	5MB pre-alarm and 180 sec (max) post-alarm
Firmware upgrade	Remote upgrade via network
API	CGI Interface document, ActiveX Interface(ocx(dll) + document)
Physical	
Power Source	DC12V/1.5A, PoE(Power over Ethernet): 802.3af-Optional
Power Consumption	Max. 6W with IR
Net Weight	280g (Camera only)
Storage	Micro SD Slot (Built-in)
LED's	Power, Network Connection
Dimension	130mm(Dia.) x77mm
General	
Operating Temperature	-10 degree~50 degree Celsius(14F~122F)
Storage Temperature	-20 degree~60 degree Celsius(-4F~140F)

Made in Korea